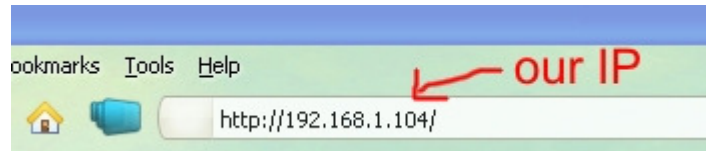


Setting up Remote Control for OM3500A

1. Remote Control using own public IP Address

1.1. Changing Remote Control's settings

Open up a browser and enter the Remote Control's current IP Address (default 192.168.1.222)



An authentication window will show up. Leave the fields empty and click OK.



Open Network menu and change the IP Address, Subnet Mask, Default Gateway and DNS Server settings to the ones given by the internet provider. When done, click OK.

LANTRONIX® Firmware Version: **V6.6.0.2**
MAC Address: **00-20-4A-BA-2D-F6**

Network Settings

Network Mode:

IP Configuration

Obtain IP address automatically
Auto Configuration Methods

BOOTP: Enable Disable
DHCP: Enable Disable
AutoIP: Enable Disable

DHCP Host Name:

Use the following IP configuration:

IP Address:
Subnet Mask:
Default Gateway:
DNS Server:

change these numbers to the ones given by the internet provider

Ethernet Configuration

Auto Negotiate

Speed: 100 Mbps 10 Mbps
Duplex: Full Half

You can change the Remote Control's Port number too, if you need/want in the Connection menu. When done, click OK.

LANTRONIX[®]Firmware Version: **V6.6.0.2**
MAC Address: **00-20-4A-BA-2D-F6**

Connection Settings

- Network
- Server
- Serial Tunnel
 - Hostlist
 - Channel 1
 - Serial Settings
 - Connection**
- Email
 - Trigger 1
 - Trigger 2
 - Trigger 3
- Configurable Pins
- Apply Settings
- Apply Defaults

Channel 1

Connect Protocol

Protocol:

Connect Mode

<p>Passive Connection:</p> <p>Accept Incoming: <input type="text" value="Yes"/></p> <p>Password Required: <input type="radio"/> Yes <input checked="" type="radio"/> No</p> <p>Password: <input type="text"/></p> <p>Modem Escape Sequence Pass Through: <input checked="" type="radio"/> Yes <input type="radio"/> No</p>	<p>Active Connection:</p> <p>Active Connect: <input type="text" value="None"/></p> <p>Start Character: <input type="text" value="0x0D"/> (in Hex)</p> <p>Modem Mode: <input type="text" value="None"/></p> <p>Show IP Address After RING: <input checked="" type="radio"/> Yes <input type="radio"/> No</p>
---	--

Endpoint Configuration:

Local Port: ← change this if you need

Remote Port:

Remote Host:

Auto increment for active connect

Common Options:

Telnet Com Port Cntrl:

Terminal Name:

Connect Response:

Use Hostlist: Yes No

LED:

Disconnect Mode

On Mdm_Ctrl_In Drop: Yes No

Check EOT(Ctrl-D): Yes No

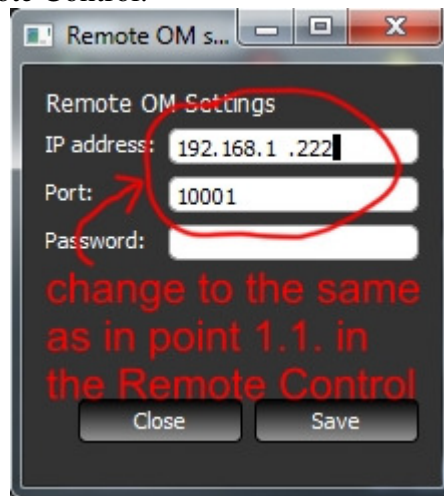
Hard Disconnect: Yes No

Inactivity Timeout: : (mins : secs)

When done, click Apply Settings in menu.

1.2. Setting up RemoteOM (software)

In RemoteOM software, open Settings and enter the IP Address and Port number you set up in point 1.1. in your Remote Control.



1.3. Congratulations, you're ready to work! :-)

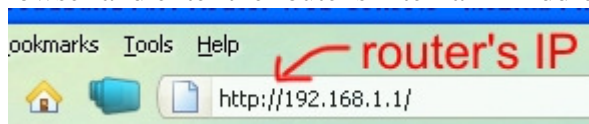
2. Remote Control without own IP Address, behind a router

2.1. Changing Remote Control's settings (optional)

If you need to change the Remote Control's settings for some reason, use point 1.1. written above.

2.2. Changing router's settings

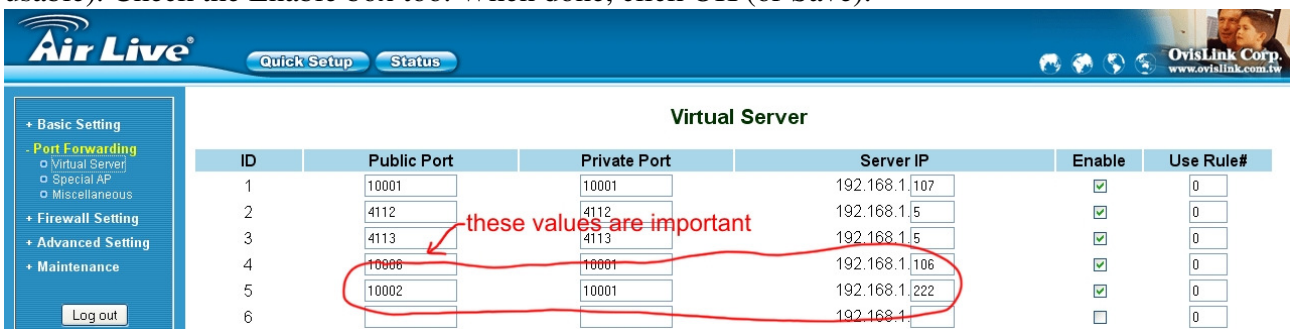
Open up a browser and enter the router's internal IP Address (usually 192.168.1.1)



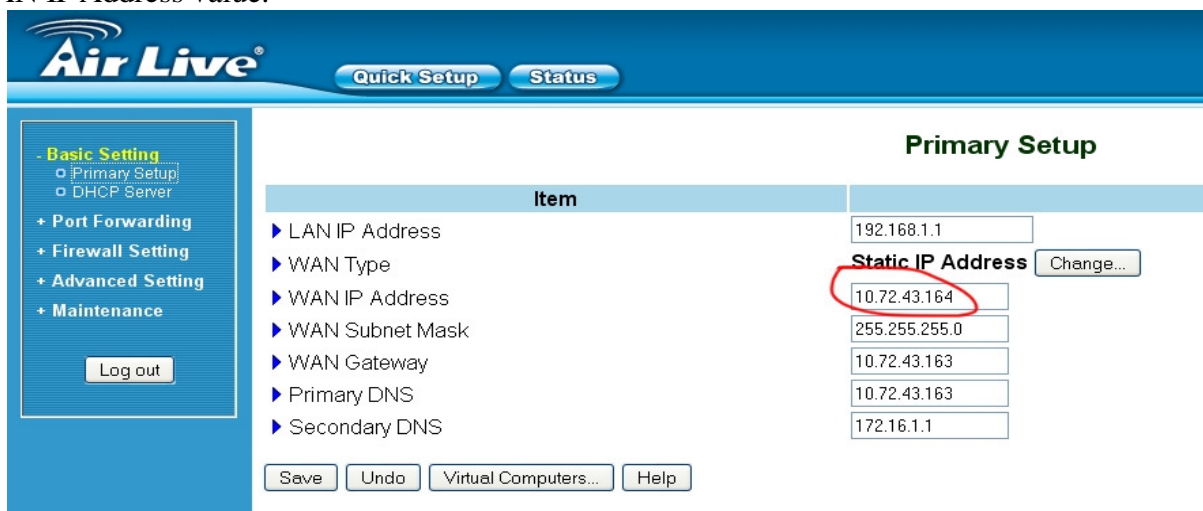
An authentication windows should show up. You need to enter the routers login and password. Usually a router's default login is „admin“ or „administrator“ and default password „admin“ or an empty field.



Open Firewall Settings (depends on router software, can be called Forwarding, Port Forwarding, or something similar). As Server IP enter the Remote Control's IP Address, 192.168.1.222 if you haven't changed it, or the one you changed to in point 2.1. Private port should be 10001 in default, or the one you changed to in point 2.1. Some routers don't have a separate Public Port settings. If you got, enter a free port number (usually the default 10001 is free and usable). Check the Enable box too. When done, click OK (or Save).



Open Basic Setup (or WAN Settings or similar, depending on router) and note the WAN IP Address value.



2.3. Setting up RemoteOM (software)

In RemoteOM software, open Settings. Enter the IP Address and Port number you set up in point 2.2. in your router. IP Address is the WAN IP Address in basic setup page and Port number is the Port (or Public Port if separate) in forwarding page. When done, click Save.



2.4. Congratulations, you're ready to work! :-)